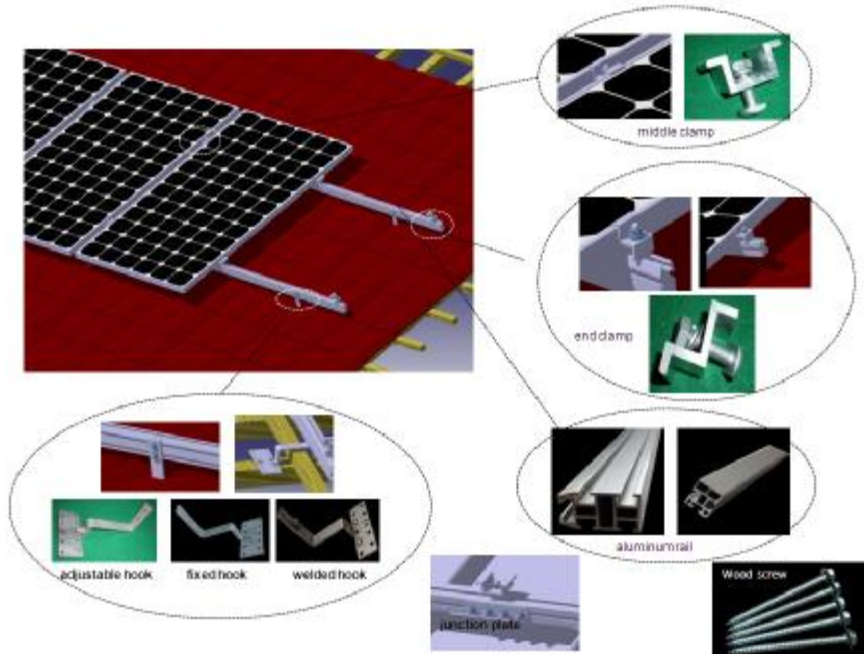


## Tile Roof Mount



No: AR001A0

### Technical Information

Install Site: Pitched tile roof

Tilt Angle: Flushed with the roof (10~60 deg)

Applicable Module: Silicon / thin-film module

Wind Load: 62~74km / h

Snow Load: 0.5kN / m<sup>2</sup>

Material: Al6063-T5 & stainless steel 304

Color: Natural or Customized

Surface Treatment: Anodizing & stainless steel

Warranty: 10-year warranty and 25-year service life

### KEY BENEFITS AND FEATURES:

- w **Easy to install** The standard components inserted into the aluminum rail's channel can be fastened automatically during installation and can be pre-assembled with the clamp and hook to minimize the time and cost of installation.
- w **Adaptable to various modules** The height of the clamp and the length of the aluminum rail can be adjusted to match customer's modules.
- w **Customized hooks** to cater to tiles with different thickness.
- w **Superior aesthetics and light weight** Since the main material of the system is silvery-white aluminum, it creates an elegant appearance and has light weight.
- w **Proven reliability** The system is designed to stand up to the extreme weather and other international structure load standard by the skilled engineer. The main support components also have been test to guaranty its structure and load-carrying capacity. Its service life can reach 25 years.
- w **CE-listed and AS 1170.2-defined** as a complete system.

### Reference Projects



Czech Republic



Australia